



THE TURNING TIMES

Volume 14 Issue 9

An East Texas Woodturners Publication

September 2006

President	Cary Grant	903-858-2112	cgrant@classicnet.net
Vice President	John Leonard	903-592-6009	jdl38@flash.net
Treasurer	Archie Stivner	903-876-4085	ashighsaw@earthlink.net
Secretary	Bill Holmes	903-894-4684	wmhtald@aol.com
Project Coordinator	Ken Terrell	903-839-4735	krtp@tyler.net
Librarian	Tom & Marjorie Crosby	903-567-4701	ctomsturnings@aol.com
Newsletter Editor	Peggy C. Ross	903-489-3895	misscorky2@earthlink.net

Visit us at www.easttexaswoodturners.org

THE TURNING TIMES is published monthly as an information source for members of the East Texas Woodturners (ETW). ETW is a chapter of The American Association of Woodturners (AAW) and is committed to serving woodturners in the East Texas area surrounding Tyler, Texas. The ETW Chapter joins with the AAW in its dedication to providing education, information and organization to those interested in woodturning.

Meeting at TJC West

September 09, 2006 @ 9:00 a.m.

Calendar of Events

- September 9, 2006**
Regular Meeting
- Sept. 29-Oct. 1, 2006**
Temple, TX SWAT
- October 4, 2006**
SC TJCW Rm.101
- October 14, 2006**
ETWA Picnic Meeting
Club Challenge
- October 25, 2006**
SC TJCW Rm.101
- November 4, 2006**
Regular Meeting
- November 10-11, 2006**
Wooden Wonderland @
Rose Garden
- November 29, 2006**
SC TJCW Rm.101
- December 9, 2006**
Regular Meeting
- January 3, 2007**
SC TJCW Rm.101

The Prez says

Hello Woodturners. If you are like me the heat has slowed everything down except the water meter. For those of you, who have persisted, please stay safe. This weather can get to you before you know it.

Bob Matern's demonstration "Kinetic Starburst platter" was first rate. Some of us will get a second chance to see this demo since his presentation was a practice run for Bob's SWAT demo. In my opinion, he has practiced enough; I could find no fault in his presentation. In fact I will make it a point to watch him at temple to see if I missed anything the first time. If you have received your Fall AAW "American Wood turner", you will find that another Dallas club member, Larry Genender is a candidate for AAW Board Member.

That said, I would like to remind you that the East Texas Woodturners is an affiliate of the American Association of Woodturners. While we don't require you to join the AAW unless you are an ETW board member. But, you are certainly encouraged to do so. AAW is a well-run organization and has done a lot to promote woodturning as well as supporting this club monetarily and intellectually. Membership renewal season is officially open and ballots have been sent out for the three board positions open this year. If you join or renew before Jan. 1st, you are eligible to win a Powermatic 2520B lathe worth \$2900.

Our demo this month is Clay Foster's "Two Piece Hollow Form" & "Multiple Axis Vessel". You can bet that this will be an attention getter. I know the front row will be full.

Don't forget the October meeting will be at the TJC Skills Center, next door to our regular meeting place. The program will be our Club Challenge, which is being run by Cecil Cox. We have 5 teams that will be competing. At about 11:30 am we will have a club picnic. There will be a signup sheet at the September meeting. Family members are encouraged to attend. Please call John Leonard if you plan to attend but have not signed up and will not be at the September meeting. John is handling the picnic and will be ordering our BBQ lunch. We will have a tool swap, so bring your unused tools and swap them for more tools you have just got to have.

The November meeting will be November 4th at our normal place at TJC West. This is a week earlier than normal.

As you probably have noticed, Kevin Stephenson has resigned as Vice President. John Leonard has agreed to fill the position. Kevin, on behalf of the members, Steering

Committee and myself, thanks for your hard work. We know that when the job conflicts subside you will be back with us.

The Swat Symposium is September 29, 30, and October 1st. You can still register by mail until September 16th and after that you must register at the door. Cost is \$80 mail in and \$90 at the door. This includes lunch for Saturday & Sunday. The mail in form is available at their web site <http://www.texasturntwo.com/>

See you Saturday September 9th at TJC West at 9:00am.

Cary

The ETW Club Challenge!!

Well, it's that time again...The ETW Club Challenge!!! As most of you know, the challenge will consist of five teams of three persons each; one advance turner, one intermediate turner and a novice turner. There will be five identical Jet mini lathes set up. Each team member having an equal share of the work and time. At the end the winner of the challenge will be chosen by popular vote of the membership in attendance. Contact Cecil Cox.

From The Editor

I want to thank each of you for your comfort and prayers during the recent loss of my husband Travis. If Travis left any legacy to me his wife, our children and grandchildren it was his profound love of family and his passion for woodworking. He loved to work with his hands and God had truly given him a talent to do so. You made us feel welcome and a part of the woodturning family from the first meeting. I want to thank each of you for making the last eighteen months of his life a joy and one that we can look back on and remember with a smile. The Living Memorial Program in Batesville, Indiana has planted a tree in a national forest in Travis' name. A living memorial which will have a lasting impact on earth, just as he had a lasting impact on all of our lives. Peggy Ross & Family

Table of Contents

The Prez Says	1
Classifieds	2
Pictures	3-4
Mentor List	4

Classifieds

Custom Woods

Woods for Craftsmen, Builders and Hobbyist. Jim Tobias 903-396-2196
Located between Kerns & Trinidad, off Hwy 31.

The Hardwood Barn

New shipment of new turning blocks of all sizes. Toni @ 903-822-4113
toni@hardwoodbarn.com

For Sale.

Ernie Conover Lathe with 1-1/2hp Leeson VS motor and controller (similar to the one used on the club lathe).

Oneway Stronghold Chuck with extra jaws. Twelve Sorby tools - some never used.

Powerlock sanding system - includes 1", 2", & 3" holders and lots of sanding discs.

Lots of miscellaneous associated turning stuff. Call: Jim McCreary - 903-882-1982

The SWAT Symposium

The SWAT symposium is September 29, 30 and October 1 in Temple. Pre-registration is running way ahead of last years and the host hotel is sold out. Also Baylor has a home football game on the 30th. So if you are going or even thinking about going I would recommend that you get hotel/motel reservations as soon as possible. The SWAT website (Texasturntwo.com) has a list of the hotel/motels and their telephone numbers.

Thanks
John

News From Your Library

The library has just received a generous contribution from Tom Criswell. Tom has donated the entire year's issues of WOODTURNING magazine for 2005. Let me tell you there is something for everyone in these magazines. There are articles on using scrapers and the skew, making platters, salad bowls, testing tools, pictures and interviews of international turners, how to color wood, inlay materials, and much more. Thanks Tom for your generous donation.

We have also added 2 demos by Binh Pho – Surface Designs, showing how he uses the airbrush, and piercing and Thin Wall Turnings. Also 2 demos by Neil Scobe – Making An Erosion Bowl, how to make deep carvings in a wide thick bowl rim and Making A Tree Platter, making a platter with trees carved thru one edge.

Remember to return what you have checked out – others are waiting for these items. Thanks for your cooperation. Your Librarians Marjorie and Tom

The August 30, Steering Committee Meeting

The following are the issues discussed and motions past at the August 30th Steering Committee Meeting:

- Both the Club Challenge and the picnic will be at TJC west. Discussion as what to serve was followed with Ken Terrell indicated that he would look into a catered BBQ. There was a motion that an up-front meal charge of \$3.00 per person be collected with the club covering the balance of the catering cost.
- John Leonard will chair a committee that would modify and amend ETW by-laws. Major concern over VP succession to presidency will be addressed. Amendments will be put before the general club membership in time for voting on the changes at the November 2006 meeting.
- It was suggested that the club acquire needed table covers and display equipment. These items would be purchased on an "as needed" basis.
- Motion carried that the club secure storage facility or enclosed trailer in which to house infrequently used club equipment.
- Joseph Armstrong was authorized to purchase necessary equipment that would ease picture taking and transfer of pictures and membership profiles into the newsletter. It was also decided that the new laptop computer be available at monthly meetings.

The Club Picnic

Our annual Club Picnic will be October 14th after the Club Challenge. Menu is: Bar-b-q (sliced beef), potato salad, cole slaw, beans, cold drinks and trimmings. We encourage you to bring guests. Your cost is \$3.00 per person (no refunds after October 9th) and the Club will pickup the remainder. You must sign up at the September meeting and pay your cost. John Leonard will have the sign up sheet and will take your money. If you can't be at the September meeting, let John know you want to come and how many guests you are bringing @\$3.00 per person, payable at the October meeting. You are responsible for your portion of the cost even if you don't come unless you cancel by October 9th. John can be reached at 903-592-6009 or jdl38@flash.net.

WOODCRAFT

Helping You Make Wood Work

Jet	Powermatic	Delta
Sorby	Nova	Crown
Tormek	One-Way	Vega

Store Hours

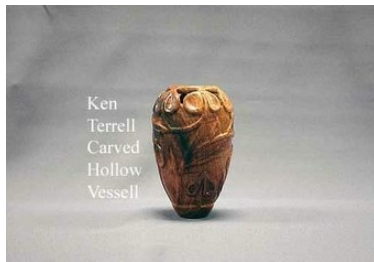
Monday – Friday	9:00 a.m. to 7:00 p.m.
Thursday	9:00 a.m. to 9:00 p.m.
Saturday	9:00 a.m. to 6:00 p.m.
Sunday	11:00 a.m. to 5:00 p.m.

1430 Marsh Lane – Addison, TX 75001
(972) 241-0701

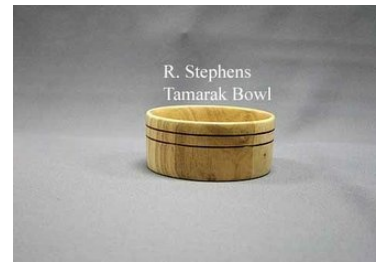
August Show & Tell



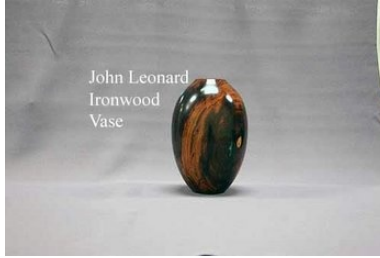
Ken Terrell Ash Bats



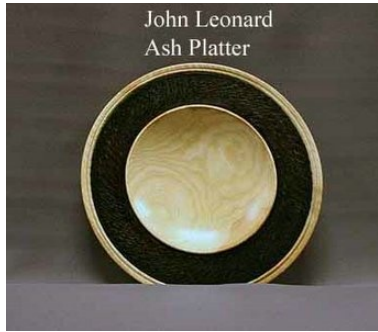
Ken Terrell Carved Hollow Vessel



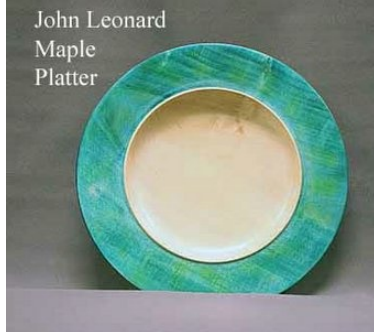
R. Stephens Tamarak Bowl



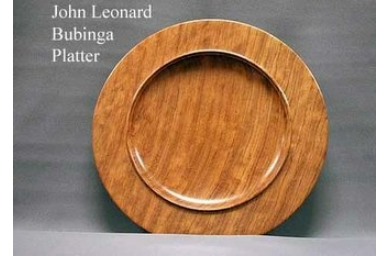
John Leonard Ironwood Vase



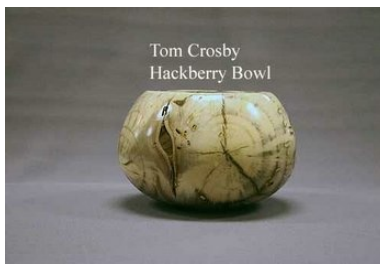
John Leonard Ash Platter



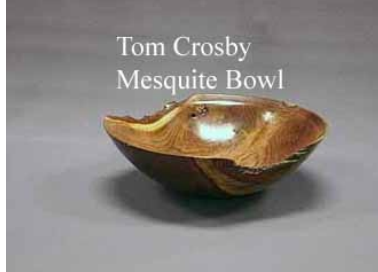
John Leonard Maple Platter



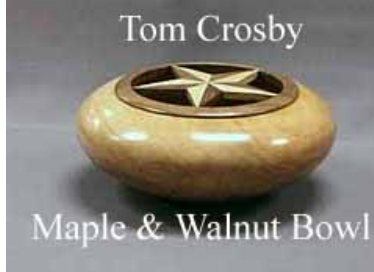
John Leonard Bubinga Platter



Tom Crosby Hackberry Bowl

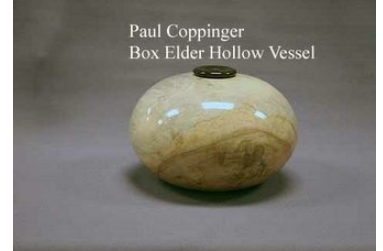


Tom Crosby Mesquite Bowl



Tom Crosby

Maple & Walnut Bowl



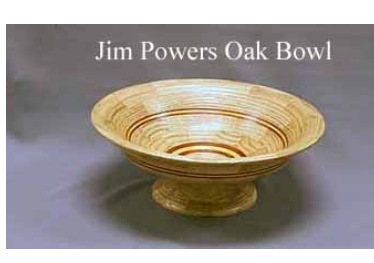
Paul Coppinger Box Elder Hollow Vessel



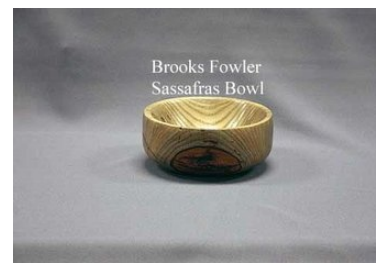
Paul Coppinger Sassafras/Holly Vase



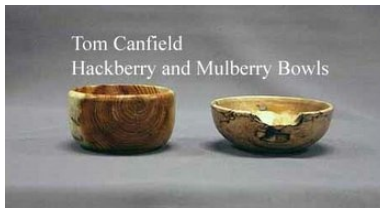
Paul Coppinger Pecan Platter



Jim Powers Oak Bowl



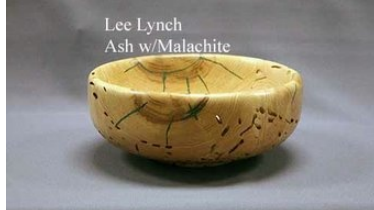
Brooks Fowler Sassafras Bowl



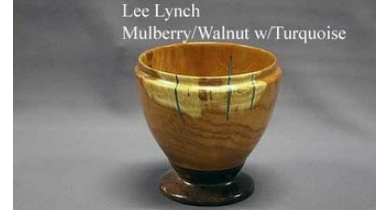
Tom Canfield Hackberry and Mulberry Bowls



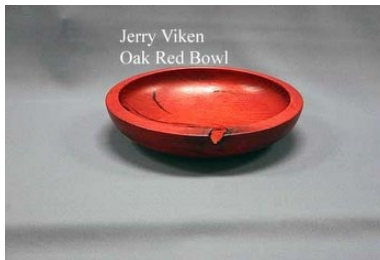
Paul Coppinger Pecan Platter



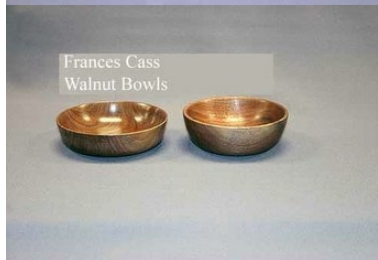
Lee Lynch Ash w/Malachite



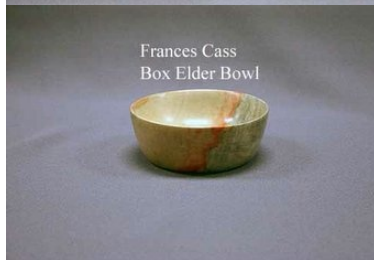
Lee Lynch Mulberry/Walnut w/Turquoise



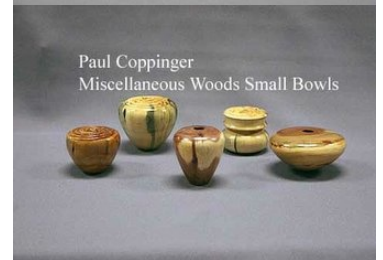
Jerry Viken Oak Red Bowl



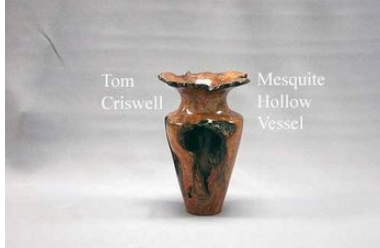
Frances Cass Walnut Bowls



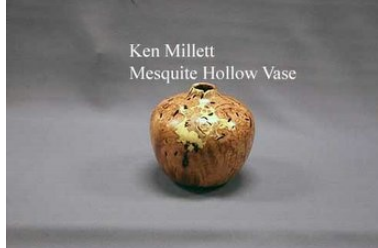
Frances Cass Box Elder Bowl



Paul Coppinger Miscellaneous Woods Small Bowls



Tom Criswell Mesquite Hollow Vessel

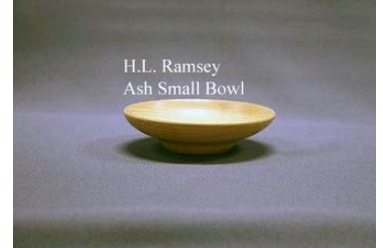


Ken Millett Mesquite Hollow Vase



H.L. Ramsey Mesquite, Walnut

Tooth Fairy Boxes



H.L. Ramsey Ash Small Bowl



Mentors List

Tom Criswell	509-1042	Tyler	tmcriswell@yahoo.com
Tom Crosby	567-4701	Canton	ctomsturnings@aol.com
Norm Dixon	753-6980	Longview	normandixon@cablelynx.com
Steve Green	489-1507	Athens	s6570@aol.com
Ed Heuslein	834-3838	Kilgore/Overton	heuslein@earthlink.net
John Leonard	592-6009	Tyler/New Harmony/Lindale	jd138@flash.net
Lynn Pratt	581-0769	Noonday/Flint	LPRATT@lpratthomes.com
Ken Terrell	839-4735	Whitehouse	kpterrell@cox.net