



THE TURNING TIMES

Volume 14 Issue 10

An East Texas Woodturners Publication

October 2006

President	Cary Grant	903-858-2112	cgrant@classicnet.net
Vice President	John Leonard	903-592-6009	jd138@flash.net
Treasurer	Archie Stivner	903-876-4085	ashighsaw@earthlink.net
Secretary	Bill Holmes	903-894-4684	wmhtald@aol.com
Project Coordinator	Ken Terrell	903-839-4735	ktrpt@tyler.net
Librarian	Tom & Marjorie Crosby	903-567-4701	ctomsturnings@aol.com
Newsletter Editor	Peggy C. Ross	903-489-3895	misscorky2@earthlink.net

Visit us at www.easttexaswoodturners.org

THE TURNING TIMES is published monthly as an information source for members of the East Texas Woodturners (ETW). ETW is a chapter of The American Association of Woodturners (AAW) and is committed to serving woodturners in the East Texas area surrounding Tyler, Texas. The ETW Chapter joins with the AAW in its dedication to providing education, information and organization to those interested in woodturning.

Meeting at TJC West

October 14, 2006 @ 9:00 a.m.

From The VEEP

Our October Meeting is our Club Challenge followed by our Club Picnic. If you have not signed up and wish to attend the picnic call John Leonard 903-592-6009. The charge is \$3.00 per person payable at the door. Should you not attend monies paid in advance are non refundable. Everyone needs to bring chairs to set on.

The SWAT Symposium was held this last weekend in Temple, Texas and was a great success. Our very own Walter Tate is president of SWAT and Walter and his team did an outstanding job getting things ready and running the show. Thanks, Walter. Attendance was 585, setting a new record. ETWT was well represented; I would guess 25 or more. We were responsible for the Instant Gallery (place where the attendees displayed their turnings) and we again got rave reviews. Ken Terrell did his usual outstanding job getting it organized. Thanks Ken, you make us look good. We had 111 different artists displaying 606 turnings. Some 1 inch in size to several over 8 feet. You had to see them to believe it. Lots of money changed hands in the Vendors area. I know I spent more than my share. The demos were first rate; I learned a lot and survived the two I did. It's not too soon to start making plans for next years SWAT Symposium.

Mr. Surles loyalty to the East Texas Woodturner is an example that was worthy of this award and we hope that he will continue to hold us in the esteem we wish to convey to him and his family. Martha Surles drove with her husband to Tyler, although she could not attend the meeting, also received a bouquet of roses.

Dear Cary, I do thank you and your officers so much for the honor of my lifetime membership in our club. I know I am not worthy but I am just as thrilled with the document. James sent me a color picture this week and it was good. Martha loved the roses and you were so nice to include her. The flowers lasted a long time and I got pictures to remember. Please thank the club for their friendship and their help. They are grand. Best regards, Clint

The October 4, Steering Committee Meeting

The following are the issues discussed and motions past at the October 4th Steering Committee Meeting:

- There was a discussion that in addition to Bar B Q, Potato Salad, Beans, Cole Slaw & Pickles we will serve Iced Tea to drink and Cookies for desert at the picnic.
- The Steering Committee recommends a change to the By-Laws to eliminate the vice-president/president elect position and replace it with a vice-president position and elect all officers for a

Calendar of Events

- October 4, 2006**
SC TJCW Rm.101
- October 14, 2006**
ETWA Picnic Meeting
Club Challenge
- October 25, 2006**
SC TJCW Rm.101
- November 4, 2006**
Regular Meeting
- November 10-11, 2006**
Wooden Wonderland @
Rose Garden
- November 29, 2006**
SC TJCW Rm.101
- December 9, 2006**
Regular Meeting
- January 3, 2007**
SC TJCW Rm.101

Clint Surles receives Lifetime Membership Award



Mr. Clint Surles, a longtime member of the East Texas Woodturners, was awarded an honorary lifetime membership at the September 2006 regular meeting. Clint is still an avid woodworker and at 80+ still very active around his ranch near Palestine, TX. Clint told the membership last year that while he really enjoyed his fellowship with us, his family had requested that he not drive all the way to Tyler along. Because of his promise to his family he has not attended many meetings, but he has kept up with the clubs activities via the Newsletter and friends.

Table of Contents

The Prez Says	1
Classifieds	2
Pictures	3-4
Mentor List	4

Classifieds

Custom Woods

Woods for Craftsmen, Builders and Hobbyist. Jim Tobias 903-396-2196
Located between Kerns & Trinidad, off Hwy 31.

The Hardwood Barn

New shipment of new turning blocks of all sizes. Toni @ 903-822-4113
toni@hardwoodbarn.com

For Sale.

Ernie Conover Lathe with 1-1/2hp Leeson VS motor and controller (similar to the one used on the club lathe).
Oneway Stronghold Chuck with extra jaws.
Twelve Sorby tools – some never used.
Powerlock sanding system – includes 1”, 2”, & 3” holders and lots of sanding discs.
Lots of miscellaneous associated turning stuff. Call: Jim McCreary – 903-882-1982

Library News

The Library will not be open during the Club Challenge, October 14, 2006.

From The Editor

I hope that all of you are enjoying our monthly newsletter. If there is anything you wish to contribute, please email me at misscorky2@earthlink.net I am also open to suggestions as to how I might improve the Newsletter. Don't be shy, speak up.

Steering Committee Meeting Continued

- one year term. The changes proposed are all in Article VII and can be seen on the website. Amendments will be voted upon at the November 2006 regular meeting.
- The Steering Committee recommends that the current \$24.00 yearly membership fee be raised to \$36.00, commencing January 1, 2007. This change will be voted upon at the November 2006 regular meeting.
- Motion carried that the club rent a 7 X 10 foot storage facility that would be paid for quarterly. This facility would house infrequently used club equipment and enable us to house club items and material in one central place rather than in several places.

Mike Mahoney's "Mahoney's Utility Oil"

Mahoney's Utility Oil is a heat-treated walnut oil used as a substitute for polymerized (Danish oil) oils and mineral oils. It is the all-natural, food safe and non-toxic choice for your wood projects. Mahoney's Utility Oil penetrates the wood and then hardens, similar to polymerized oils, but unlike mineral oil which never dries and eventually evaporates. Although polymerized oils (boiled linseed oil, tung oil, etc.) generally offer the greatest durability for wooden items, they are toxic to the skin, emit an odor for weeks after hardening, and science is inconclusive about their safety after all the hardening agents have dissipated. Mahoney's Utility Oil is the perfect substitute for those products; it is non-toxic, food safe, and there is no offensive odor, and it provides a durable finish. Use Mahoney's Utility Oil for all your utility wood items (bowls, butcher blocks, spoons, trivets, etc.) Mahoney's Utility Oil also works great on furniture with oil finishes.

Permission to reprint granted by Mike Mahoney.

WOODCRAFT

Helping You Make Wood Work

Jet	Powermatic	Delta
Sorby	Nova	Crown
Tormek	One-Way	Vega

Store Hours

Monday – Friday	9:00 a.m. to 7:00 p.m.
Thursday	9:00 a.m. to 9:00 p.m.
Saturday	9:00 a.m. to 6:00 p.m.
Sunday	11:00 a.m. to 5:00 p.m.

1430 Marsh Lane – Addison, TX 75001
(972) 241-0701

September Show & Tell



John Stroud - Natural Edge Vessel



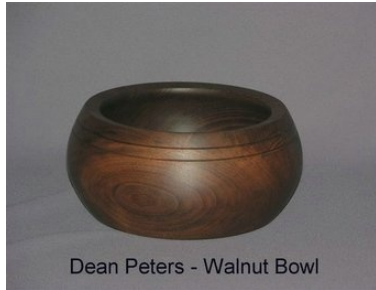
John Stroud - Plate (Back side)



Reynol Vancil - Oak Platter



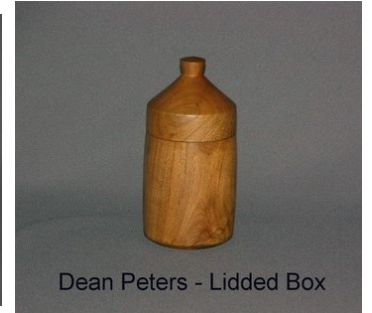
Reynol Vancil - Pecan Platter



Dean Peters - Walnut Bowl



Dean Peters - Bowls



Dean Peters - Lidded Box



John Leonard - Maple Burl



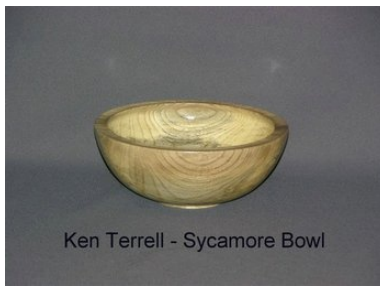
Ken Terrell - Water Birch
Decorative Edge Bowl



Ken Terrell - Sycamore
Decorative Edge Bowl



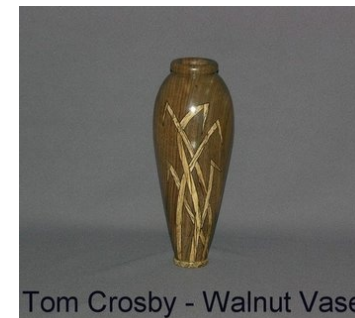
Ken Terrell - Splated Elm



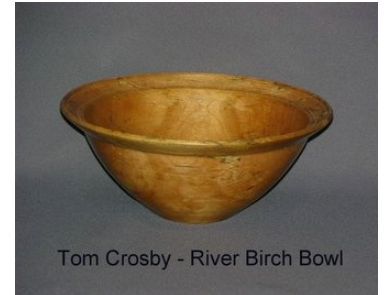
Ken Terrell - Sycamore Bowl



Ken Terrell - Fluted Bowl
(Spotted Elm)



Tom Crosby - Walnut Vase



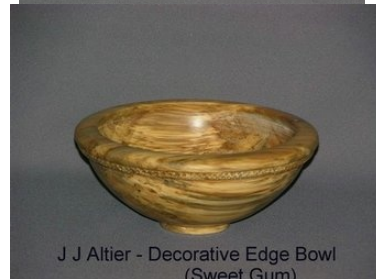
Tom Crosby - River Birch Bowl



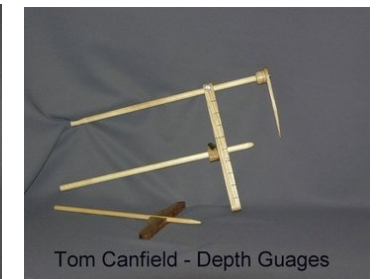
Jack Day - Natural Edge Bowl
(Dogwood)



J J Altier - Florida Macony Bowl



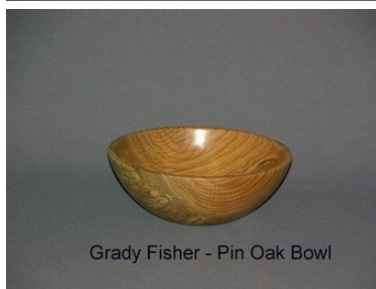
J J Altier - Decorative Edge Bowl
(Sweet Gum)



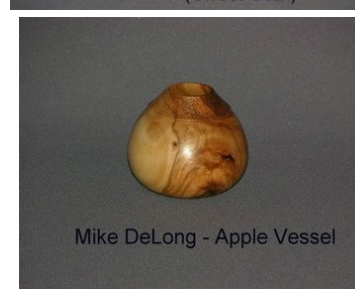
Tom Canfield - Depth Guages



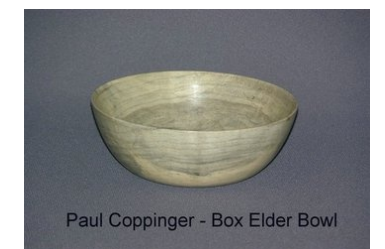
Leon McLemore - Segmented Bowl



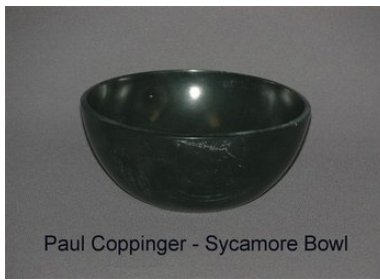
Grady Fisher - Pin Oak Bowl



Mike DeLong - Apple Vessel



Paul Coppinger - Box Elder Bowl



Paul Coppinger - Sycamore Bowl



Paul Coppinger - Pumpkins & Mushroom



Tom Criswell - Burr Oak Burr



Steve Green - Maple Platter



Steve Green - Mahogany Platter



Ed Heuslein - Sweet Gum Bowl

Mentors List

Tom Criswell	509-1042	Tyler	tmcriswell@yahoo.com
Tom Crosby	567-4701	Canton	ctomsturnings@aol.com
Norm Dixon	753-6980	Longview	normandixon@cablelynx.com
Steve Green	489-1507	Athens	s6570@aol.com
Ed Heuslein	834-3838	Kilgore/Overton	heuslein@earthlink.net
John Leonard	592-6009	Tyler/New Harmony/Lindale	jdl38@flash.net
Lynn Pratt	581-0769	Noonday/Flint	LPRATT@lpratthomes.com
Ken Terrell	839-4735	Whitehouse	kpterrell@cox.net